

Specifications

Material:
All aluminum construction. Hardware is stainless steel or zinc-plated steel.

Lens:
PMMA Acrylic Performance Optic plus choice of secondary polycarbonate lens.

Mounting:
Direct to wall with clearance for 1/4" - 5/16" hardware (others).

Drivers:
Universal Voltage 120-277V is standard. 0-10V, TRIAC & ELV (1%) dimming is standard. (Refer to Driver Specification section for other specifications)

Dark Sky Friendly:
To maintain dark sky friendly: ≤ 3000K

Electrical:
A lightning surge protective device is standard (20KA³ Max/10KA³ Nominal). Approximately 12" of pull wire extends from luminaire. All luminaires are prewired with 0-10V dimming leads.

Finish:
A polyester powder coat high quality finish. Marine grade finish is available.

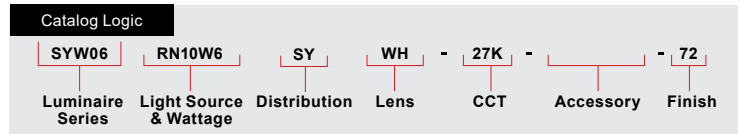
Certifications:
UL Listed for outdoor, wet location.

Modifications:
Consult factory for custom or modified designs.

Buy American:
This product is assembled in the USA and meets the Buy America(n) government procurement requirements under FAR, DFARS, and DOT regulations. [Click here for additional information.](#)

SYW06 LED

EPA: 0.47
Weight: 6.0 lbs



Catalog Number	1	2	3	4	5	6
SYW06						

1	LIGHT SOURCE & WATTAGES
	Backlit 6" Ring LED with Board-Level Optic
	R10W6 (Ring LED, 10W, 6")
	R20W6 (Ring LED, 20W, 6")
	Backlit 6" Ring LED No Board-Level Optic
	RN10W6 (Ring LED, No Optic, 10W, 6")
	RN20W6 (Ring LED, No Optic, 20W, 6")

2	DISTRIBUTION
	SY (Symmetric)

3	LENS
	NL (No Lens, for Board-Level Optic only)
	CL (Clear Polycarbonate)
	HT (High-Transmission Frosted Polycarbonate)
	WH (White Opal Polycarbonate)

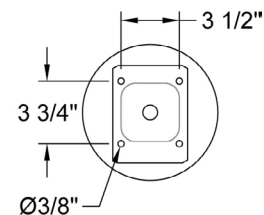
4	CCT (COLOR TEMPERATURE)
	27K (2700K)
	30K (3000K)
	35K (3500K)
	40K (4000K)
	AMB (590nm True Amber)
	*Consult Factory for 5000K

5	ACCESSORIES
	EMG-LED10.7 (10.7W LED Emergency Driver, See Below For Compatibility)
	EMG-LED17 (17W LED Emergency Driver, See Below For Compatibility)
	PC (Dusk-till-dawn Button Photocell)
	FAID (Field Adjustable Internal Dimmer)
	*Most Emergency Drivers are remote mount only (consult factory). 10W & 30W Emergency Drivers are not compatible with all LED Light Source and Wattages. For percent lumens in emergency mode, see Technical Section

6 FINISHES					
*Premium and Marine Grade Finish have additional charges					
Standard Colors	Standard Grade	Marine Grade*	Standard Colors	Standard Grade	Marine Grade*
Aspen Green	10	10M	Copper Clay	53	53M
Cantaloupe	11	11M	Silver	56	56M
Lilac	12	12M	Black Verde	61	61M
Putty	13	13M	Painted Chrome	70	70M
Weathered Copper	29	29M	Painted Copper	71	71M
Raw Unfinished	40	NA	Textured Black	72	72M
Black	41	41M	Matte Black	73	73M
Forest Green	42	42M	Textured Architectural Bronze	76	76M
Bright Red	43	43M	Textured White	77	77M
White	44	44M	Textured Silver	78	78M
Bright Blue	45	45M	PREMIUM FINISH	Premium Grade*	Marine Grade*
Sunny Yellow	46	46M	Textured Desert	80	80M
Aqua Green	47	47M	Graystone	82	82M
Galvanized	49	NA	Oil Rubbed Bronze	83	83M
Navy	50	50M	Carbon Graphite	96	96M
Architectural Bronze	51	51M			
Patina Verde	52	52M			

Consult Factory for additional paint charges and availability.

SYW06 Mounting:



Project Name: _____

Fixture Type: _____ Quantity: _____

Customer: _____

LED SPECIFICATION
• Nichia NF2W757 Low-power LEDs
• Conformal Coated PCB
• CCT: 2700K, 3000K, 3500K, 4000K, 590nm True Amber
• CRI: >90, 3 SDCM
• 3-Step Ellipse
• Certifications: UL

DRIVER SPECIFICATION
• Universal Input: 120-277V
• Dimming: 0-10V, TRIAC, ELV (Dims to 1%)
• Power Factor @ Full Load >90%
• THD @ Full Load <20%
• Constant Current Output 50/60Hz
• Operating Temperature: -30°C Minimum
• Lifetime: >50,000 hours
• Ingress Protection: IP66
• Certifications: UL Recognized, CE

FINISHES
• A polyester powder coat high quality finish is electro-statically applied and baked at 430° for exceptional durability and color retention. Products undergo an intensive five-step cleansing and pretreatment process for maximum paint adhesion. 5-year warranty for aluminum products. 2-year warranty for steel products.
• Marine grade finish provides superior salt, humidity and UV protection. This coating withstands up to 3,000 hours of continuous salt spray and is available in either a textured or gloss surface. 5-year warranty for aluminum products. 2-year warranty for steel products.

WARRANTY
See www.ANPlighting.com for complete fixture warranty.
LED warranty information
• 5 year limited warranty*
• *Limited Warranty: A typical year is defined as 4,380 hours of operation.

ACCESSORIES



FINISHES COLORS

