

STYLO

ANP Lighting Collection

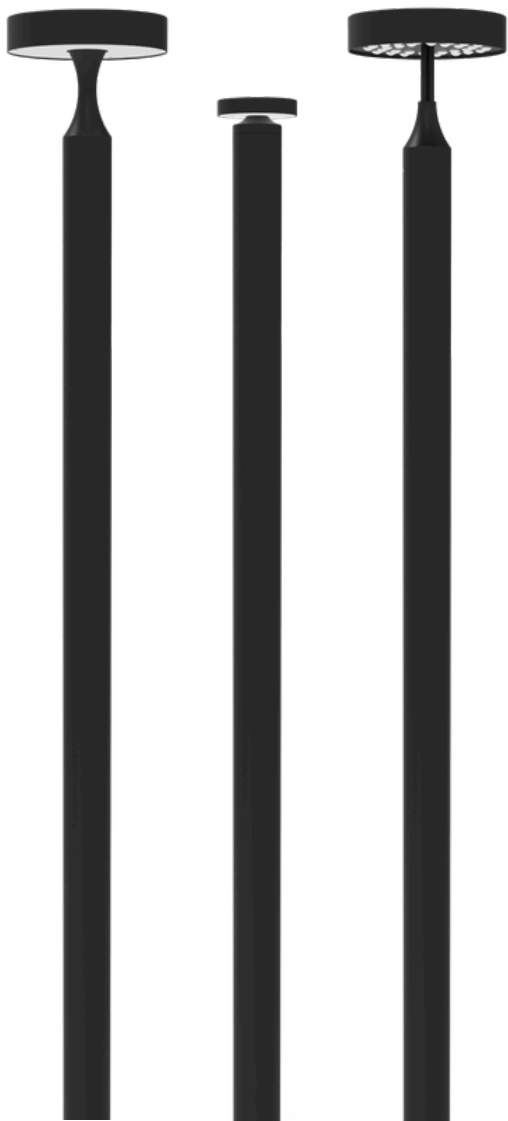


Pedestrian & Site Lighting



Create your mark with Stylo

Like a pen in a designer's hand, Stylo gives you the power to define space with light. The collection includes two post-top luminaires, a miniature post top, companion bollards, a complementing surface mount option, and a wall-mount. Each piece is thoughtfully proportioned to work individually or as a cohesive system, allowing you to create visual continuity across an entire lighting schedule.



POST-TOP LUMINAIRES — THREE STYLES



WALL MOUNT & SURFACE MOUNT



BOLLARDS - THREE STYLES



* Image shown with CCS5301 base cover



Stylo Conical Post Top

Stylo Conical Post Tops are engineered for visual comfort, performance, and control. A low glare symmetric distribution with three backlit lens options provide visually comfortable performance. Multiple CCTs including amber support environmental responsibility, while integrated surge protection ensures reliability. Designed to illuminate pathways, landscapes, and public spaces with clarity and architectural refinement.

- Up to 78W & 12,000 lumens
- Symmetric distribution pattern
- Three lens options (Clear, Frosted, White)
- 2700K, 3000K, 3500K, 4000K and 590nm True Amber
- Dark Sky Friendly
- Standard Surge Protection Device featuring 20KA maximum discharge currents



SYP13CR



* Image shown with CCS5301 base cover



Stylo Micro-Strut Post Top

The Stylo Micro-Strut Post Top combines structural elegance with expanded optical flexibility. Available in Type II, III, IV and V distributions, it adapts to varied site requirements while maintaining a unified design language. Precision optics, multiple color temperatures, and surge protection combine to deliver a confident lighting solution that balances performance with sculptural presence.

- Up to 78W & 12,000 lumens
- Type II, III, IV, and V IES distribution patterns
- 2700K, 3000K, 3500K, 4000K and 590nm True Amber
- Dark Sky Friendly
- Standard Surge Protection Device featuring 20KA maximum discharge current





* Image shown as direct burial



Stylo Fine Point Post Top

Compact in scale yet bold in expression, the Stylo Fine Point Post Top brings refined illumination to pedestrian environments and intimate architectural settings.

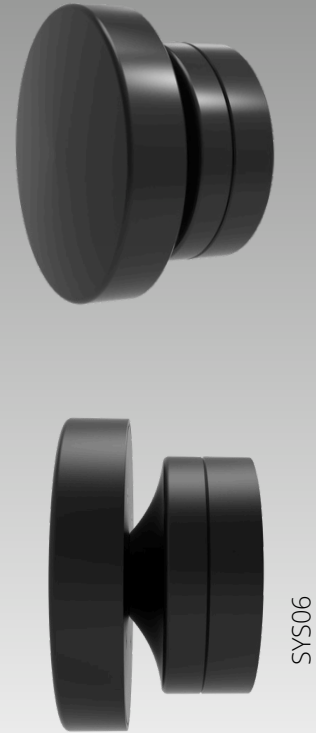
With a symmetric distribution, multiple lens and CCT options, it delivers, tailored lighting performance while preserving the collection's distinctive silhouette and design continuity.

- Up to 20W & 2,000 lumens
- Symmetric Distribution Pattern
- Three lens options (Clear, Frosted, White)
- 2700K, 3000K, 3500K, 4000K and 590nm True Amber
- Dark Sky Friendly
- Standard Surge Protection Device featuring 20KA maximum discharge current



SYP06

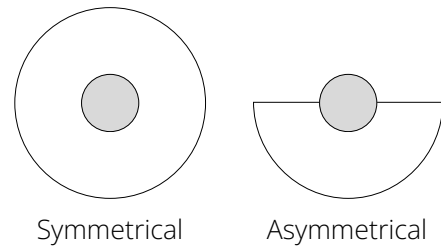




Stylo Surface Mount

The Stylo Surface Mount offers architectural illumination with minimal visual intrusion. ADA-compliance and available in symmetric or asymmetric distributions, it provides targeted lighting while preserving façade integrity. Dark Sky friendly options and multiple CCTs allow designers to maintain aesthetic consistency across vertical surfaces and pedestrian zones.

- Up to 20W & 2,000 lumens
- Wall & Surface Mount
- ADA Compliant
- Symmetric & Asymmetric Distribution Patterns
- Asymmetric Distribution Pattern is Dark Sky Friendly
- 2700K, 3000K, 3500K, 4000K and 590nm True Amber







Stylo Wall Mount

Fine Point

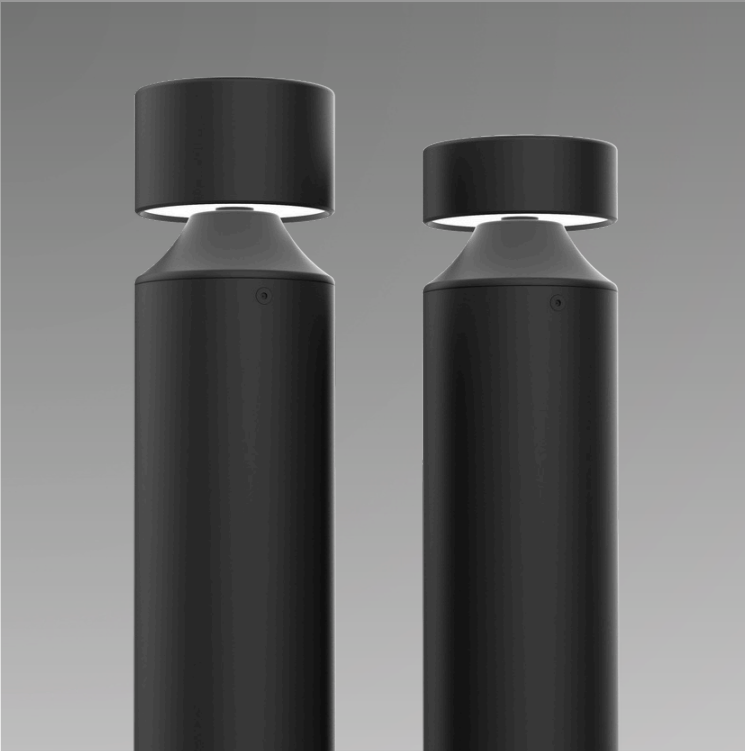
Elegant in form and purposeful in function, the Stylo Wall Mount brings the collection's signature design to the vertical plane. Its compact silhouette delivers targeted illumination while maintaining the architectural integrity of the façade.

- Up to 20W & 2,000 lumens
- Three lens options (Clear, Frosted, White)
- 2700K, 3000K, 3500K, 4000K and 590nm True Amber
- Dark Sky Friendly



SYW06





Stylo Bollards

Medium and Bold Point

Stylo Bollards extend the collection's signature profile to ground level, providing cohesive site lighting with precision control. Multiple distributions, lens options, and color temperatures ensure visual comfort and performance. Designed to guide movement, define pathways, and enhance architectural rhythm, they function as both illumination tools and sculptural site elements.

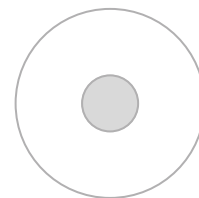
- Up to 20W & 2,000 lumens
- Symmetric & Asymmetric Distribution Patterns
- 2700K, 3000K, 3500K, 4000K and 590nm True Amber
- Dark Sky Friendly
- Standard Surge Protection Device featuring 20KA maximum discharge current



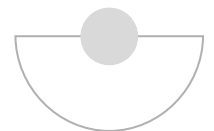
BL0141-03



BL0141-02



Symmetric



Asymmetric



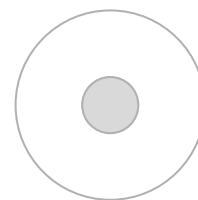


Stylo Bollards

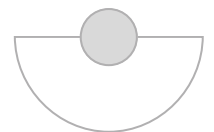
Fine Point

Grounded in both performance and presence, the Stylo Fine Bollard anchors pedestrian environments with confident illumination. Its sculpted form carries the collection's distinctive profile while delivering precise, comfortable lighting that enhances pathways, plazas, and architectural landscapes.

- Up to 20W & 2,000 lumens
- Symmetric & Asymmetric Distribution Patterns
- 2700K, 3000K, 3500K, 4000K and 590nm True Amber
- Dark Sky Friendly
- Standard Surge Protection Device featuring 20KA maximum discharge current



Symmetric



Asymmetric

The Stylo collection is available with two different optical systems optimized for control and efficiency or visual comfort allowing the designer to align the luminaire's performance with the needs of the application.

High Lumen Package Delivers Superior Efficiency

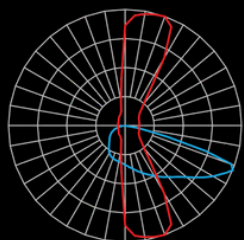
Featuring ceramic heat sink technology and individual LED optical control based on high-performance TIR optics, the ANP Ceramic Platform engine offers superior performance and efficacy. A wide selection of lumen packages, color temperatures, and light distribution types are available.

<p>IP66 LIGHT ENGINE CONSTRUCTION</p>	<p>20KA SURGE PROTECTION STANDARD</p>	<p>DIMMING 0 -10 V (DOWN TO 10%)</p>	
--	--	---	---

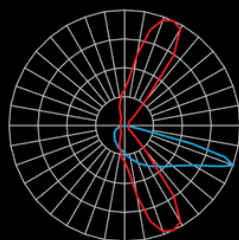
- Available distribution patterns Type II, III, IV and V
- 2700K, 3000K, 3500K, 4000K and 590nm True Amber
- 3-Step binning
- > 80 CRI

20-78 Watt

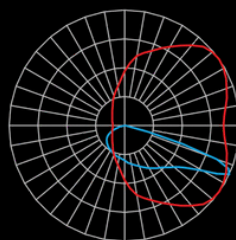
2,500 to 12,000 lumens
up to 155 lumens per Watt



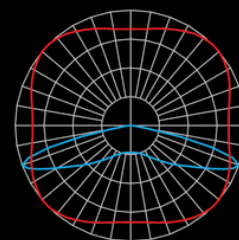
Type II



Type III



Type IV



Type V

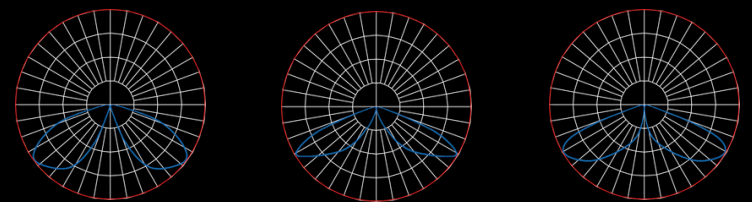
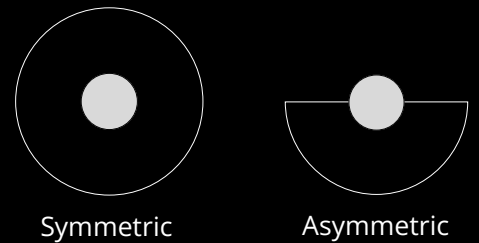
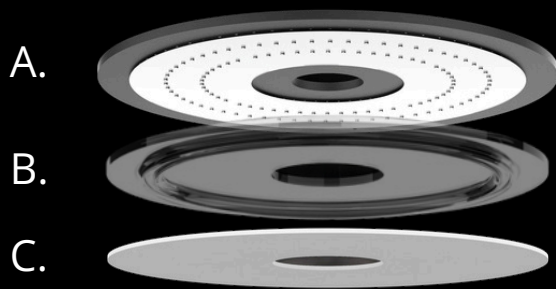
Visual Comfort & Efficiency Meet Performance

ANP Lighting's new Backlit Ring LED system increases visual comfort while maximizing luminaire spacing and light level uniformity.

The Backlit Ring LED combines:

- A. 90 CRI, tightly-spaced low power LED's to reduce pixelation.
- B. Board level optics to increase luminaire spacing and light level uniformity.
- C. Outer lensing reduces glare by softening the light and improves day form appearance by concealing the light source.

Backlit Ring LED System Construction

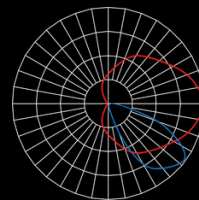
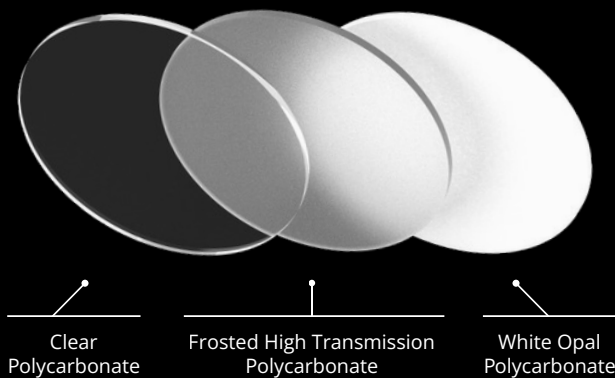


Bollards / Post Tops
Fine-Backlit Ring
(Symmetric)

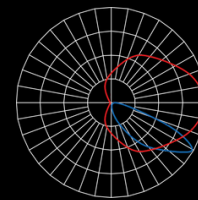
Bollards
Medium/Bold-Backlit Ring
(Symmetric)

Post Tops
Medium-Backlit Ring
(Symmetric)

Outer Lens Options



Bollards
Fine-Backlit Ring
(Asymmetric)



Bollards
Medium/Bold-Backlit Ring
(Asymmetric)

Inline Technology Center



ANP Lighting's new Inline Technology Center (patent pending) allows owners and designers to seamlessly integrate the latest lighting controls, surveillance cameras, and IOT technology without compromising the site's aesthetics and system functionality.

The Inline Technology Center provides a discrete, yet functional solution when deploying advanced technology with decorative outdoor lighting. The Technology Center eliminates the need for unsightly third-party weather tight enclosures and can be used with many different types of technologies.



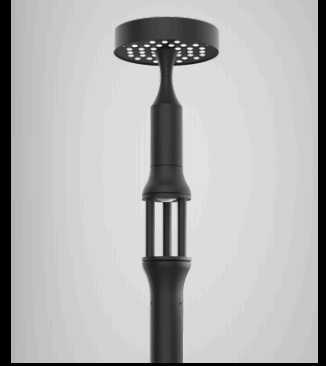
Large Format Round
3-Strut Design



Small Format Round
3-Strut Design



Technology Center
Installed Above ANP
SiteLine Luminaire



Technology Center
Installed Below STYLO
Post Top Luminaire

Examples of Custom Integrated 3rd Party Technology:



Motion
Sensor



Photocontrol
Receptacles



Wireless
Controls



Wayfinding / Beacon
Lights



Surveillance
Cameras

Contact ANP Lighting for additional information and design licensing opportunities.

ANP Lighting Control Solutions



High-Low Motion Sensor/Photocell

This sensor uses Quad Element passive infrared (PIR) technology and is suitable for mounting heights up to 40' with a 360° detection diameter of 80'. Satisfies CA Title 24 requirements for bi-level dimming of lighting fixtures. Utilizing a 0-10V signal, the sensor is capable of dimming lighting loads down to 50%, 25%, 10%, or OFF. For use with inline Technology Center, not affecting the fixture aesthetic.



Internal High-Low Motion Sensor

This sensor utilizes High-Frequency Doppler (HFD) technology to sense occupancy. For use with inline Technology Center, not affecting the fixture aesthetic.



External Mount High-Low Motion Sensor/Photocell

This line-voltage, outdoor-rated sensor utilizes 100% digital passive infrared (PIR) technology and mounts directly to a pole, post arm, or wall mount.



Third-Party Controls Ready

ANSI C136.41 receptacle for traditional dusk-till-dawn photocontrol sensor. Available 5-pin receptacle to support 0-10V dimming, 7-pin for other 3rd party controls. For use with inline Technology Center, not affecting the fixture aesthetic.

Since 1985, ANP Lighting has been inspiring and empowering innovative lighting solutions.

Today, ANP Lighting is a leading manufacturer of energy-efficient architectural lighting solutions for corporate/office, municipal, education, sports and entertainment, hospitality, and retail applications. We expertly configure and manufacture interior, exterior, site, pedestrian, and roadway lighting that aligns with aesthetic vision and beautifully illuminates design details.

Our extensive line of lighting products and collections is complemented by a wide array of mounting, size, and color options – one of the largest selections in the industry. Our in-house lighting experts can help architects, designers, and specifiers develop lighting solutions with the high quality, craftsmanship, and value only products made in the U.S.A. can deliver.



Finishes

Visit <https://anplighting.com/colors-of-anp-lighting/> for more details. Custom finishes available.



Marine grade finishes are available. Colors shown may differ slightly from painted color.



800-548-3227 | 909-982-1807

9044 Del Mar Avenue, Montclair, CA 91763

April 2026