



Project Name: _____
 Fixture Type: _____ Quantity: _____
 Customer: _____



Specifications

General:
 Decorative Indirect luminaire, center illumination via ring-shaped LED. Choice of Outside & Inside shade finish. Center cone section matches Outside Shade finish.

Material:
 Shades are constructed of 12 gauge 1100 series spun aluminum. All fasteners are stainless steel. Some washers may be galvanized. Screw hardware may not match paint.

Drivers:
 Universal voltage 120-277V is standard. 0-10V, TRIAC and ELV dimming to 1% protocols are standard for LED modules. (Refer to Driver Specification section for other specifications.)

Electrical:
 Approximately 8" of pull wire extends from luminaire. All luminaires are prewired with 0-10V dimming leads.

Finish:
 A polyester powder coat high quality finish. Marine grade finish is available.

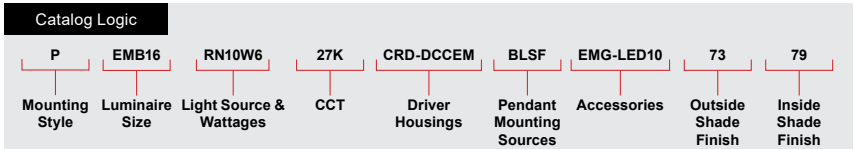
Certifications:
 UL Listed for Damp Location. Fabric cord option is Indoor Dry Location.

Modifications:
 Consult factory for custom or modified designs.

Buy American:
 This product is assembled in the USA and meets the Buy America(n) government procurement requirements under FAR, DFARS, and DOT regulations. [Click here for additional information.](#)

P-EMB16 LED

Weight: EMB16 - 4 lbs.
 EMB20 - 9 lbs.
 EMB24 - 18 lbs.



Catalog Number	1	2	3	4	5	6	7	8	9
	P-EMB20								

1 MOUNTING STYLE
P (Pendant)
F (Flush Mount/ Wall Mount)

2 LUMINAIRE SIZE
EMB16
EMB20
EMB24

3 LIGHT SOURCE & WATTAGES
RN10W6 (Ring LED, No Optic, 10W, 6")
RN20W6 (Ring LED, No Optic, 20W, 6")

4 CCT (COLOR TEMPERATURE)
27K (2700K)
30K (3000K)
35K (3500K)
40K (4000K)
50K (5000K) Consult Factory

5 DRIVER HOUSINGS	
(Driver Housing only Required with Color Cord and/or Emergency Backup Options)	
N	No selection is required if Color Cord or Emergency Backup are not chosen
Color Cord Driver Housing Options Choose Color Cord Style in Box 6	
CRD-DCC	(Driver Housing for Color Cord only; 7-3/4" x 1-1/2")
SSC-DCC	(Driver Housing for SS Cable/Color Cord only; 7-3/4" x 1-1/2")

Emergency Backup Driver Housing Options Choose EMG Driver with DCCEM in Box 7	
CRD-DCCEM-BLC	(Emergency Ballast Housing for Black Cord only; 12" x 1-1/2")
CRD-DCCEM-WHC	(Emergency Ballast Housing for White Cord only; 12" x 1-1/2")
CRD-DCCEM	(Emergency Ballast Housing for Color Cord only; 12" x 1-1/2")
ST-DCCEM	(Emergency Ballast Housing for Stem only; 12" x 1-1/2")
SSC-DCCEM-BLC	(Stainless steel cable with 6-foot black cord and 12" canopy)
SSC-DCCEM-WHC	(Stainless steel cable with 6-foot white cord and 12" canopy)
*Driver Housing finish will match outside shade finish.	

6 PENDANT MOUNTING SOURCES	
N	Leave blank if Flush Mount was chosen in box 1
Stainless Steel Cable Mounts (See page 4 for color cord style)	
SSC-BLC-5W	(Stainless steel cable with 6-foot black cord and 5-3/8" canopy)
SSC-WHC-5W	(Stainless steel cable with 6-foot white cord and 5-3/8" canopy)
Cord Mounts (See page 4 for color cord style)	
N	No Selection Required if: CRD-DCCEM-BLC; CRD-DCCEM-WHC; SSC-DCCEM-BLC or SSC-DCCEM-WHC is chosen in Box 7.
SJT Cord	
BLC-5W (6' Black 5-wire SJT Cord)	WHC-5W (6' White 5-wire SJT Cord)
Solid Fabric Colored Cords Must Choose DCC Housing in Box 5	
BLSF (6' Black)	KGSF (6' Kelly Green)
ORSF (6' Orange)	WHSF (6' White)
GYSF (6' Gray)	CBSF (6' Cobalt Blue)
LGSF (6' Lime Green)	CASF (6' Cardinal)
CHSF (6' Chocolate Brown)	SBSF (6' Sky Blue)

Patterned Fabric Colored Cords Must Choose DCC Housing in Box 5	
BWHPF (6' Black/White Houndstooth)	NMTPF (6' Navy Mini Tweed)
BIHPF (6' Brown/Ivory Houndstooth)	
Glossy Fabric Colored Cords Must Choose DCC Housing in Box 5	
GMGF (6' Gun Metal)	BRGF (6' Bronze)
SSGF (6' Sterling Silver)	GOGF (6' Gold)
CPGF (6' Copper Penny)	
Stem Mounts	
1/2" OD Stems with Hang Straight Swivel Flat Canopy	1/2" OD Rigid Stems with Flat Canopy
1STS6 1STS12 1STS18 1STS24 1STS36 1STS48	1STR6 1STR12 1STR18 1STR24 1STR36
1STS60 1STS72 1STS96	1STR48 1STR60 1STR72 1STR96
*Arm mount, Wall mount or Stem finish will match outside shade finish.	

7 ACCESSORIES	
EMG-LED06 (6W, LED Emergency Driver, DCCEM Canopy)	
EMG-LED10 (10W, LED Emergency Driver, DCCEM Canopy)	
EMG-LED16 (16W, LED Emergency Driver, DCCEM Canopy)	
EMG-LED20 (20W, LED Emergency Driver, DCCEM Placement)	
EMG-LEDR05 (5W, LED Emergency Driver, Remote Placement up to 25', Provided with Flexible Conduit)	
EMG-LEDR7.8 (7.8W, LED Emergency Driver, Remote Placement up to 25', Provided with Flexible Conduit)	
EMG-LEDR10.7 (10.7W, LED Emergency Driver, Remote Placement up to 25', Provided with Flexible Conduit)	
*Most EM Packs are remote mount only (consult factory). For percent lumens in emergency mode, see Technical Section at www.ANPlighting.com	
DCCEM Canopy finish will match outside shade finish. Remote EMs are incompatible with 3-wire Color Cords.	

Project Name: _____

Fixture Type: _____ Quantity: _____

Customer: _____

8 9		FINISHES			
*Premium and Marine Grade Finish have additional charges					
Standard Colors	Standard Grade	Marine Grade*	Standard Colors	Standard Grade	Marine Grade*
Aspen Green	10	10M	Copper Clay	53	53M
Cantaloupe	11	11M	Silver	56	56M
Lilac	12	12M	Black Verde	61	61M
Putty	13	13M	Painted Chrome	70	70M
Weathered Copper	29	29M	Painted Copper	71	71M
Raw Unfinished	40	NA	Textured Black	72	72M
Black	41	41M	Matte Black	73	73M
Forest Green	42	42M	Textured Architectural Bronze	76	76M

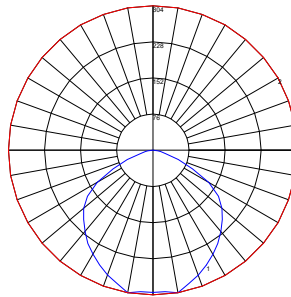
Bright Red	43	43M	Textured White	77	77M
White	44	44M	Textured Silver	78	78M
Bright Blue	45	45M	PREMIUM FINISH	Premium Grade*	Marine Grade*
Sunny Yellow	46	46M	Textured Desert	80	80M
Aqua Green	47	47M	Graystone	82	82M
Galvanized	49	NA	Oil Rubbed Bronze	83	83M
Navy	50	50M	Carbon Graphite	96	96M
Architectural Bronze	51	51M			
Patina Verde	52	52M			

Consult Factory for additional paint charges and availability.

EMBER POLAR CURVES

(1) Vertical Plane Through Horizontal Angles

(2) Horizontal Cone Through Vertical Angle



EMB16 - PERFORMANCE TABLE - RING LED - NO OPTIC - DELIVERED LUMENS

LED CATALOG	WATTS	2700K		3000K		3500K		4000K	
		DELIVERED LUMENS	lm/W	DELIVERED LUMENS	lm/W	DELIVERED LUMENS	lm/W	DELIVERED LUMENS	lm/W
RN10W4	10W	305	31	305	31	327	30	327	30
RN20W4	20W	610	31	610	31	654	30	654	30

EMB20 - PERFORMANCE TABLE - RING LED - NO OPTIC - DELIVERED LUMENS

LED CATALOG	WATTS	2700K		3000K		3500K		4000K	
		DELIVERED LUMENS	lm/W	DELIVERED LUMENS	lm/W	DELIVERED LUMENS	lm/W	DELIVERED LUMENS	lm/W
RN10W4	10W	348	35	348	35	373	37	373	37
RN20W4	20W	697	35	697	35	747	37	747	37

EMB24 - PERFORMANCE TABLE - RING LED - NO OPTIC - DELIVERED LUMENS

LED CATALOG	WATTS	2700K		3000K		3500K		4000K	
		DELIVERED LUMENS	lm/W	DELIVERED LUMENS	lm/W	DELIVERED LUMENS	lm/W	DELIVERED LUMENS	lm/W
RN10W4	10W	370	37	370	37	397	40	397	40
RN20W4	20W	740	37	740	37	793	40	793	40

FINISHES COLORS

STANDARD



PREMIUM



Project Name: _____

Fixture Type: _____ Quantity: _____

Customer: _____

EMBER PENDANT



P-EMB16



P-EMB20



P-EMB24

EMBER FLUSH MOUNT



F-EMB16

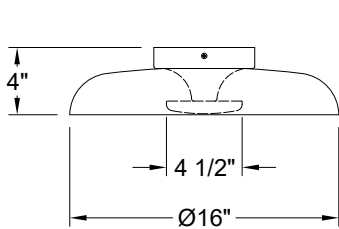


F-EMB20

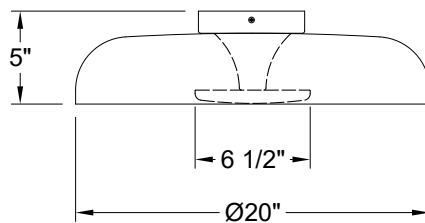


F-EMB24

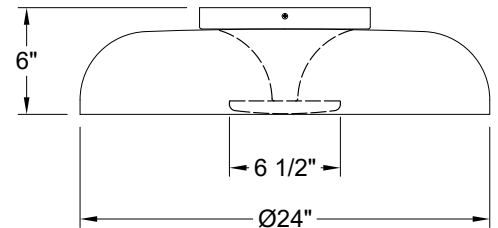
LINE DRAWINGS



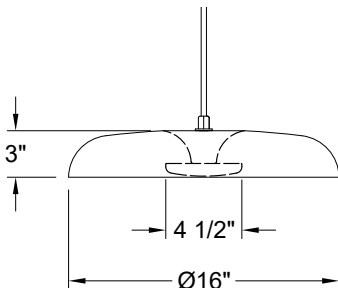
F-EMB16



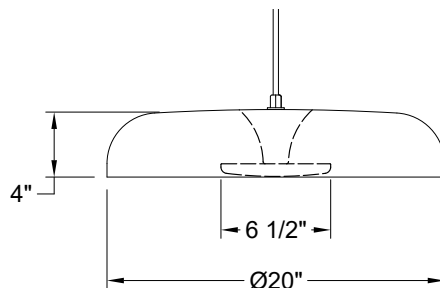
F-EMB20



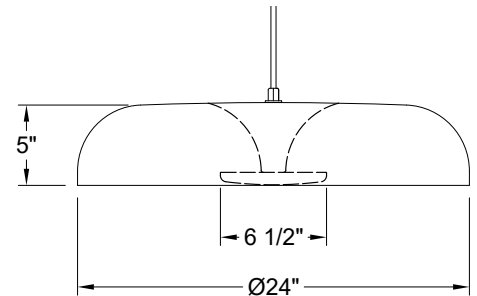
F-EMB24



P-EMB16



P-EMB20



P-EMB24

Project Name: _____

Fixture Type: _____ Quantity: _____

Customer: _____

LED SPECIFICATION
• Nichia NF2W757 Low-power LEDs
• Conformal Coated PCB
• CCT: 2700K, 3000K, 3500K, 4000K
• CRI: >90, 3 SDCM
• Certifications: UL

DRIVER SPECIFICATION
• Universal Input: 120-277V
• Dimming: 0-10V, TRIAC, ELV (Dims to 1%)
• Power Factor @ Full Load >90%
• THD @ Full Load <20%
• Constant Current Output 50/60Hz
• Operating Temperature: -30°C Minimum
• Lifetime: >50,000 hours
• Ingress Protection: IP66
• Certifications: UL Recognized, CE

FINISHES
• A polyester powder coat high quality finish is electro-statically applied and baked at 430°F for exceptional durability and color retention. Products undergo an intensive five-step cleansing and pretreatment process for maximum paint adhesion.
• Marine grade finish provides superior salt, humidity and UV protection. This coating withstands up to 3,000 hours of continuous salt spray, comes with a 5-year warranty and is available in either a textured or gloss surface.

WARRANTY
See www.ANPlighting.com for complete fixture warranty.
LED warranty information
• 5 year limited warranty*
• *Limited Warranty: A typical year is defined as 4,380 hours of operation.

DRIVER HOUSINGS



CRD-DCC
(7-3/4" x 1-1/2") Cord Only



SSC-DCC
(7-3/4" x 1-1/2") Cable/Cord Only



CRD-DCCEM
(12" x 1-1/2") Cord Only



SSC-DCCEM
(12" x 1-1/2") Cable/Cord Only



ST-DCCEM
(12" x 1-1/2") Stem Only

SOLID FABRIC COLORED CORDS



GYSF | Gray



CHSF | Chocolate Brown



WHSF | White



CASF | Cardinal



LGSF | Lime Green



KGSF | Kelly Green



CBSF | Cobalt Blue



SBSF | Sky Blue

PATTERNED / GLOSSY FABRIC COLORED CORDS



BIHPF | Brown/Ivory



GYCPF | Gray/Citrus Yellow



MOSPF | Magenta/Orange Stripe



NMTPF | Navy Mini Tweed



SSGF | Sterling Silver



CPGF | Copper Penny



BRGF | Bronze



GOGF | Gold