

## Specifications

## Material:

RLM shades are constructed of 12 gauge 1100 series spun aluminum. Wall back plate and driver housing are cast aluminum, some types include a spun metal cover. All fasteners are stainless steel. Some washers may be galvanized. Inside of shade is reflective white finish for all colors except galvanized paint finish. Screw hardware may not match paint.

## Electrical:

Approximately 6" of pull wire extends from luminaire. All luminaires are prewired with 0-10V dimming leads. Post Arms and Wall Mounts are also prewired with line voltage & dimming leads.

## Drivers:

Universal Voltage 120-277V is standard. 0-10V, TRIAC and ELV dimming to 1% protocols are standard for LED modules. (Refer to Driver Specification section for other specifications.)

Project Name: \_\_\_\_\_

Fixture Type: \_\_\_\_\_ Quantity: \_\_\_\_\_

Customer: \_\_\_\_\_

## Dark Sky Friendly:

To maintain dark sky friendly compatibility: ≤ 3000K

## Certifications:

Cord mounts are UL Listed for damp location. Arm mount, stem mount and wall mount are UL Listed for outdoor, wet location. LED Module is IP66

## Finish:

A polyester powder coat high quality finish. Marine grade finish is available.

## Modifications:

Consult factory for custom or modified designs.

## Buy American:

This product is assembled in the USA and meets the Buy America(n) government procurement requirements under FAR, DFARS, and DOT regulations. [Click here for additional information.](#)

## WF527 LED

EPA: 3.45

Weight: 6.5 lbs.

## Catalog Logic

<b>WF527</b>	<b>AM30W</b>	<b>D</b>	<b>40K</b>	<b>RTCW</b>	<b>E6</b>	<b>200GLCL</b>	<b>PC</b>	<b>41</b>
RLM Style	Light Source, Wattage & Dimming	Logic Distribution	CCT	Driver Housing	Mounting	Glass & Guard	Accessories	Outside Shade Finish

## Catalog Number

1

2

3

4

5

6

7

8

WF527

## 1 LIGHT SOURCE &amp; WATTAGES

AM10W (10W ANP Module COB)

AM20W (20W ANP Module COB)

AM30W (30W ANP Module COB)

## 2 DISTRIBUTION

D (Dome Frosted Acrylic Wide Distribution Lens)

## 3 CCT (COLOR TEMPERATURE)

27K (2700K)

30K (3000K)

35K (3500K)

40K (4000K)

## 4 DRIVER HOUSINGS

Wall Mount Options  
Choose Arm in Box 5

RTCW (Driver Housing for Wall only (E-arms); 6 1/2" OD x 5 5/8" H)

SRTCW (Smooth Driver Housing for Wall only (E-arms); 6" OD x 2 7/8" H)

RTCNCW (Driver Housing/No Spun Cover for Wall only (E-arms); 5 7/8" OD x 2 5/8" H)

Cord Mount Options  
Choose Cord Style in Box 5

CRD-RTCC (Driver Housing for Cord only; 6 1/2" OD x 5 5/8" H)

CRD-SRTCC (Smooth Driver Housing for Cord only; 6" OD x 2 7/8" H)

CRD-RTCNC (Driver Housing/No Spun Cover for Cord only; 5 7/8" OD x 2 5/8" H)

Stainless Steel Cable Mount Options  
Choose Cord Style in Box 5

SSC-RTCC (Driver Housing for SS Cable/Cord only; 6 1/2" OD x 5 5/8" H)

SSC-SRTCC (Smooth Driver Housing for SS Cable/Cord only; 6" OD x 2 7/8" H)

SSC-RTCNC (Driver Housing/No Spun Cover for SS Cable/Cord only; 5 7/8" OD x 2 5/8" H)

Stem Mount Options  
Choose Stem Size in Box 5

ST-RTCC (Driver Housing for Stem only; 6 1/2" OD x 5 5/8" H)

ST-SRTCC (Smooth Driver Housing for Stem only; 6" OD x 2 7/8" H)

ST-RTCNC (Driver Housing/No Spun Cover for Stem only; 5 7/8" OD x 2 5/8" H)

Emergency Backup Housing Options  
Choose EMG Driver in Box 7CRD-DCEM (Emergency Ballast Housing for Cord only; 12" OD x 1 1/2" H)  
Choose Cord Style in Box 5.ST-DCEM (Emergency Ballast Housing for Stem only; 12" OD x 1 1/2" H)  
Choose Stem Size in Box 5.SSC-DCEM (Emergency Ballast Housing for SS Cable/Cord only; 12" OD x 1 1/2" H)  
Choose Cord Style in Box 5.

\*Driver Housing finish will match fixture finish.

## 5 MOUNTING SOURCES\*

## Arm Mounts

E3 E4 E6 E8 E9 E10 E11 E12  
E18 E25

## Wall Mounts

## WM54

## Post Mounts

PM10 PM20 PM30 PM40 PM50 PM319

## Cord Mounts

Color & Style  
(See page 4 for color cord style)

## SJT Cord

BLC (6' Black SJT Cord)

WHC (6' White SJT Cord)

## Solid Fabric Colored Cords

BLSF (6' Black)

KGSF (6' Kelly Green)

ORSF (6' Orange)

WHSF (6' White)

GYSF (6' Gray)

CBSF (6' Cobalt Blue)

LGSF (6' Lime Green)

CASF (6' Cardinal)

CHSF (6' Chocolate Brown)

SBSF (6' Sky Blue)

## Patterned Fabric Colored Cords

BWHPF (6' Black/White Houndstooth)

MOSPF (6' Magenta/Orange Stripe)

BIHPF (6' Brown/Ivory Houndstooth)

NMTPF (6' Navy Mini Tweed)

GYCPF (6' Gray/Citrus Yellow)

## Glossy Fabric Colored Cords

GMGF (6' Gun Metal)

BRGF (6' Bronze)

SSGF (6' Sterling Silver)

GOGF (6' Gold)

CPGF (6' Copper Penny)

## Stem Mounts

1/2" (13/16" OD) Rigid Stems

3/4" (1" OD) Rigid Stems

2ST6 2ST12 2ST18

3ST6 3ST12 3ST18

2ST24 2ST36 2ST48

3ST24 3ST36 3ST48

2ST60 2ST72 2ST96

3ST60 3ST72 3ST96

\*Arm mounts, Wall mounts or Stem finish will match fixture finish.

Project Name: \_\_\_\_\_

Fixture Type: \_\_\_\_\_ Quantity: \_\_\_\_\_

Customer: \_\_\_\_\_

6	GLASS & GUARDS
Up to 30W Max	
200GLCL	(Clear Glass)
200GLFR	(Frosted Glass)
200GLPR	(Prismatic Glass)
200GLCLGUP	(Clear Glass & Wire Guard)
200GLFRGUP	(Frosted Glass & Wire Guard)
200GLPRGUP	(Prismatic Glass & Wire Guard)
200GLCLGUPC	(Clear Glass and Cast Guard)
200GLFRGUPC	(Frosted Glass and Cast Guard)
200GLPRGUPC	(Prismatic Glass and Cast Guard)
200GLGUP	(Wire Guard with No Glass)
200GLGUPC	(Cast Guard with No Glass)
*Cast and Wire Guard finish will match fixture.	

7	MOUNTING ACCESSORIES
EMG-LED06	(6W, LED Emergency Driver, DCCM Placement, ANP Module Only)
EMG-LED10	(10W, LED Emergency Driver, DCCM Placement, ANP Module Only)
EMG-LED16	(16W, LED Emergency Driver, DCCM Placement, ANP Module Only)
EMG-LED20	(20W, LED Emergency Driver, DCCM Placement, ANP Module Only)
EMG-LEDR05	(5W, LED Emergency Driver, Remote Placement up to 30', ANP Module Only, Provided with Flexible Conduit)
EMG-LEDR7.8	(7.8W, LED Emergency Driver, Remote Placement up to 30', ANP Module Only, Provided with Flexible Conduit)
EMG-LEDR10.7	(10.7W, LED Emergency Driver, Remote Placement up to 30', ANP Module Only, Provided with Flexible Conduit)
EMG-LEDR17	(17W, LED Emergency Driver, Remote Placement up to 30', ANP Module Only, Provided with Flexible Conduit)
GR27	(27" Wire Grill)**
PC	(Button Photo Cell) Remote Only
SC	(Scroll for Arms)**
SLC	(Sloped Ceiling Mount Canopy, 20° Max)**
SQ	(Square Back Plate)**
SWL	(Adjustable Locking Swivel)**
TBK	(Turn Buckle Kit)**
*Most EM Packs are remote mount only (consult factory). For percent lumens in emergency mode, see Technical Section at <a href="http://www.ANPlighting.com">www.ANPlighting.com</a>	
**Accessory finish will match fixture finish.	

8	FINISHES				
*Premium and Marine Grade Finish have additional charges					
Standard Colors	Standard Grade	Marine Grade*	Premium Colors	Premium Grade*	Marine Grade*
Aspen Green	10	10M	High Gloss Black	01	01M
Cantaloupe	11	11M	Arctic Silver	14	14M
Lilac	12	12M	Candy Apple Red	64	64M
Putty	13	13M	Cobalt Blue	65	65M
Raw Unfinished	40	NA	Caramel	66	66M
Black	41	41M	Butterscotch	67	67M
Forest Green	42	42M	Black Silver	68	68M
Bright Red	43	43M	Gunmetal Gray	69	69M
White	44	44M	Mayan Gold	79	NA
Bright Blue	45	45M	Textured Desert Stone	80	80M
Sunny Yellow	46	46M	Extreme Chrome	81	81M
Aqua Green	47	47M	Graystone	82	82M
Galvanized	49	NA	Oil Rubbed Bronze	83	83M
Navy	50	50M	Carbon Graphite	96	96M
Architectural Bronze	51	51M			
Patina Verde	52	52M			
Copper Clay	53	53M			
Silver	56	56M			
Black Verde	61	61M			
Painted Chrome	70	70M			
Painted Copper	71	71M			
Textured Black	72	72M			
Matte Black	73	73M			
Textured Architectural Bronze	76	76M			
Textured White	77	77M			
Textured Silver	78	78M			
Consult Factory for additional paint charges and availability.					

PERFORMANCE TABLE - ANP MODULE - INITIAL LUMENS

			2700K					3000K					3500K					4000K				
LED CATALOG	WATTS	DISTRIBUTION	INITIAL LUMENS	lm/W	B	U	G	INITIAL LUMENS	lm/W	B	U	G	INITIAL LUMENS	lm/W	B	U	G	INITIAL LUMENS	lm/W	B	U	G
AM10W	10W	TYPE V	847	85	1	0	0	888	89	1	0	0	899	90	1	0	0	910	91	1	0	0
AM20W	20W	TYPE V	1694	85	1	0	0	1777	89	1	0	0	1799	90	1	0	0	1820	91	1	0	0
AM30W	30W	TYPE V	2541	85	1	0	0	2665	89	1	0	0	2698	90	1	0	0	2730	91	1	0	0

MODULE SPECIFICATION
• CREE XLAMP™ CMU
• Typical Efficacy 90 lm/W
• CCT: 2700K, 3000K, 3500K, 4000K
• CRI: 90 (min) 92 Typical
• 3-Step Ellipse
• Certifications: UL Recognized, RoHS, ENEC, REACH

DRIVER SPECIFICATION
• Universal Input: 120-277V
• Dimming: 0-10V, TRIAC, ELV (Dims to 1%)
• Power Factor @ Full Load >90%
• THD @ Full Load <20%
• Constant Current Output 50/60Hz
• Operating Temperature: -30°C Minimum
• Lifetime: >50,000 hours
• Ingress Protection: IP66
• Certifications: UL Recognized, CE, FCC, Energy Star, DLC, CA Title 24

Project Name: \_\_\_\_\_

Fixture Type: \_\_\_\_\_ Quantity: \_\_\_\_\_

Customer: \_\_\_\_\_

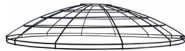
**FINISHES**

- A polyester powder coat high quality finish is electro-statically applied and baked at 430° for exceptional durability and color retention. Products undergo an intensive five-step cleansing and pretreatment process for maximum paint adhesion.
- Marine grade finish provides superior salt, humidity and UV protection. This coating withstands up to 3,000 hours of continuous salt spray, comes with a 5-year warranty and is available in either a textured or gloss surface.

**WARRANTY**See [www.ANPlighting.com](http://www.ANPlighting.com) for complete fixture warranty.

LED warranty information

- 5 year limited warranty\*
- \*Limited Warranty: A typical year is defined as 4,380 hours of operation.

**ACCESSORIES****EMG-LED****GR27****PC****SLC****SQ****SWL****TBK****SC****POPULAR ARM MOUNTS**Dimensions are Projection x Height | CB included with all arms [Click here for all Arm Mount styles](#)**E3** | 35" x 11 7/8"**E4** | 29" x 14"**E6** | 29" x 9 1/4"**E8** | 32 1/4" x 12 1/2"**E9** | 28" x 43 5/8"**E10** | 55 1/4" x 18"**E11** | 38 1/4" x 17 1/4"**E12** | 40 3/8" x 2"**E15** | 16 3/8" x 10 1/2"**E18** | 30 3/4" x 21 3/8"**E24** | 10" x 2"**E25** | 23" x 5 1/4"**POPULAR WALL MOUNTS**Dimensions are Projection x Height [Click here for all Wall Mount styles](#)**WM54** | 23 3/8" x 18"**POPULAR POST MOUNTS**Dimensions are Projection x Height [Click here for all Post Mount styles](#)**PM10** | 14 1/2" x 25"**PM20** | 30 1/8" x 25"**PM30** | 21 5/8" x 28 7/8"**PM40** | 43 3/8" x 28"**PM50** | 27" x 38"**PM319** | 16 5/8" x 27 1/2"

Project Name: \_\_\_\_\_

Fixture Type: \_\_\_\_\_ Quantity: \_\_\_\_\_

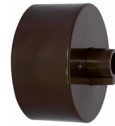
Customer: \_\_\_\_\_

**DRIVER HOUSINGS**

**RTCW**  
(6 1/2" OD x 5 5/8" H) Wall Only (E-arms)



**RTCNCW**  
(5 7/8" OD x 2 5/8" H) Wall Only (E-arms)



**SRTCW**  
(6" OD x 2 7/8" H) Wall Only (E-arms)



**RTCC**  
(6 1/2" OD x 5 5/8" H)



**RTCNC**  
(5 7/8" OD x 2 5/8" H)



**SRTCC**  
(6" OD x 2 7/8" H)



**DCCM**  
(12" OD x 1 1/2" H)

**GLASS GUARD**

► UP TO 30W MAX ► CL = Clear ► FR = Frosted ► PR = Prismatic ► 100 = Small ► 200 = Large



**Glass Only**  
9 1/4" H X 5" W  
200GLCL  
200GLFR  
200GLPR



**Glass with Cast Guard**  
10 1/4" H X 5 1/2" W  
200GLCLGUPC  
200GLFRGUPC  
200GLPRGUPC



**Glass with Wire Guard**  
10 1/4" H X 5" W  
200GLCLGUP  
200GLFRGUP  
200GLPRGUP



**GUPEC Guard Only**  
10 1/4" H X 5 1/2" W  
200GLGUPC (Cast Guard)



**GUP Guard Only**  
10 1/4" H X 5" W  
200GLGUP (Wire Guard)

**SOLID FABRIC COLORED CORDS**

All fabric Color Cords are three conductor, 1/4" diameter



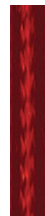
**GYSF** | Gray



**CHSF** | Chocolate Brown



**WHSF** | White



**CASF** | Cardinal



**LGSF** | Lime Green



**KGSF** | Kelly Green



**CBSF** | Cobalt Blue



**SBSF** | Sky Blue

**PATTERNED FABRIC COLORED CORDS**

All fabric Color Cords are three conductor, 1/4" diameter



**BIHPF** | Brown/Ivory Houndstooth



**GYCPF** | Gray/Citrus Yellow



**MOSPF** | Magenta/Orange Stripe



**NMTPF** | Navy Mini Tweed

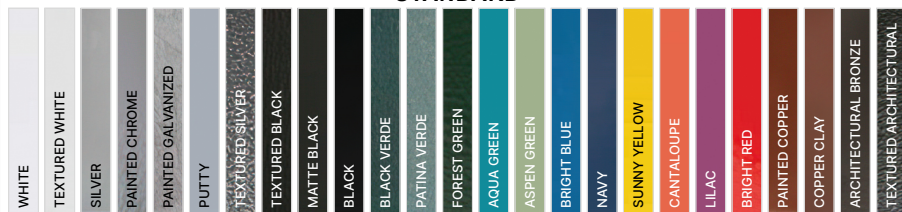
Project Name: \_\_\_\_\_

Fixture Type: \_\_\_\_\_ Quantity: \_\_\_\_\_

Customer: \_\_\_\_\_

**GLOSSY FABRIC COLORED CORDS**

All fabric Color Cords are three conductor, 1/4" diameter

**SSGF** | Sterling Silver**CPGF** | Copper Penny**BRGF** | Bronze**GOGF** | Gold**FINISHES COLORS****STANDARD****PREMIUM**