

Project: _____
 Fixture Type: _____ Quantity: _____
 Customer: _____



Catalog Logic

BD6SQSTL14.7 - SBDC6FW - N/A - 99
 Pole Bolt Cover Accessory Finish

Catalog Number

1

2

3

4

SBDC6FW

99

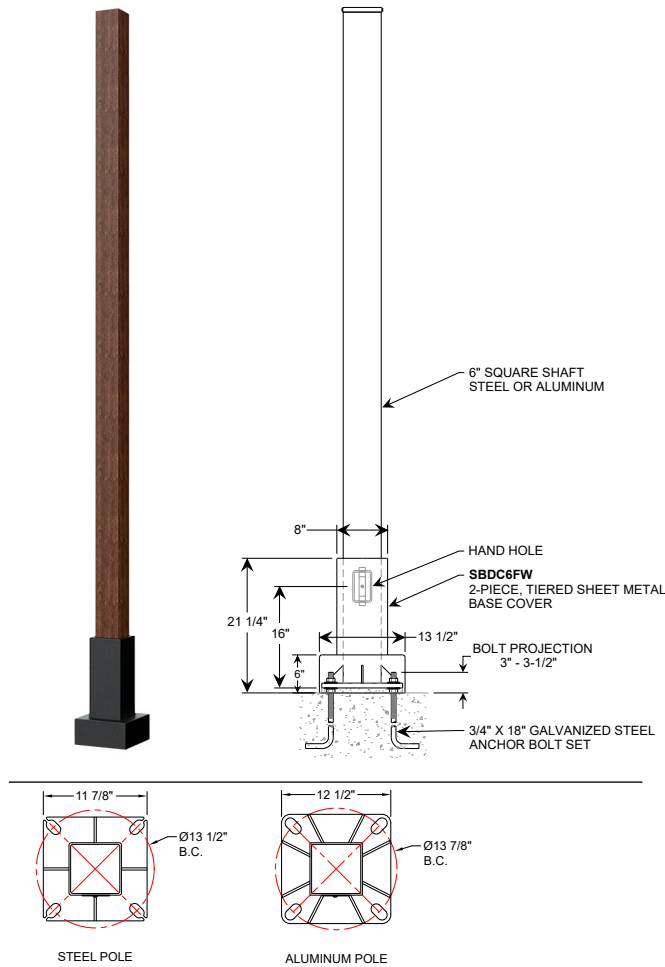
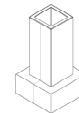
1	Item Number	SQ	Height	Wall	EPA 80 MPH	EPA 90 MPH	EPA 100 MPH
	STEEL POLES						
	BD6SQSTL12.7	6.00"	12'	7ga	39.0	30.8	25.0
	BD6SQSTL13.7	6.00"	13'	7ga	37.4	29.5	24.0
	BD6SQSTL14.7	6.00"	14'	7ga	35.1	27.6	22.5
	BD6SQSTL15.7	6.00"	15'	7ga	30.7	24.0	19.7
	BD6SQSTL16.7	6.00"	16'	7ga	26.2	20.7	16.8
	BD6SQSTL17.7	6.00"	17'	7ga	24.2	19.1	15.5
	BD6SQSTL18.7	6.00"	18'	7ga	22.1	17.5	14.2
	ALUMINUM POLES						
	BD6SQ12.188	6.00"	12'	.188	12.4	9.8	8.0
	BD6SQ13.188	6.00"	13'	.188	9.3	7.4*	6.0*
	BD6SQ14.188	6.00"	14'	.188	7.8	6.2*	-
	BD6SQ15.188	6.00"	15'	.188	7.8	6.2*	-
	BD6SQ16.188	6.00"	16'	.188	7.0	5.5*	-
	BD6SQ17.188	6.00"	17'	.188	7.0	5.5*	-
	BD6SQ18.188	6.00"	18'	.188	6.2	-	-

Note: (*) For use with Sequoia Series PA10003-1 single arm only.

2

BOLT COVER

SBDC6FW (Decorative, Tiered
2-piece Bolt Cover, 13-1/2" x 21-1/4")



Material:

Steel poles - 7 gauge, round corner, rectangular shaft (ASTM-A500 Grade B, 42,000 PSI minimum yield) with one flush-welded vertical seam. Shaft is welded to a 3/4" flat steel (ASTM-36/572-50) anchor base with reinforcement brackets.

Aluminum poles - 0.188" wall, sharp corner, extruded 6061-T6 aluminum. Shaft is welded to a heavy-duty A356 cast aluminum anchor base.

Mounting:

Four (4) provided anchor bolts are 3/4" x 18". Anchor bolts, nuts and washers are hot-dipped galvanized steel. Specialized 2-piece square/tiered base cover provided.

Access:

Poles are provided with a hand hole opening and cover. For steel poles, hand hole cover is cast aluminum and secured with a single button-head screw. For aluminum poles, hand hole cover is a flat plate and secures with two (2) button-head screws. (Tamper-proof screws are an option.)

Grounding:

A 5/16-18 ground screw is integrated to inner wall of shaft, 180° to hand hole.

Pole Height:

Maximum pole length is 18 feet.

Accessories:

GFCI receptacles and other accessories are optional.

Finish:

An intensive five-step cleansing and pretreatment process for maximum paint adhesion. A polyester powder-coat high quality finish is electro-statically applied and baked at 430° for exceptional durability and color retention. Pole base coat is #8011 bronze, then a hand-treatment of wet black to simulate wood grain, then powder coated matte clear. Tiered Base Cover is #73 matte black.

Project: _____

Fixture Type: _____ Quantity: _____

Customer: _____

**3 ACCESSORIES****IBOLT** (Eye Bolt)**GFI20** (20 Amp GFCI Receptacle Outlet*)**GFI-WPU** (20 Amp GFCI Receptacle with Weather-proof while-in-use cover*)**EXTB-6SQ** (Extension Box for GFI, 6" Square Pole)**TP** Tamper-Proof Screw (Handhole)

*Please advise mounting height & orientation. Examples:

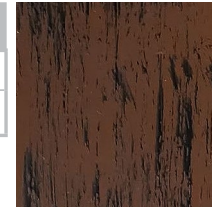
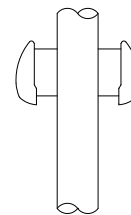
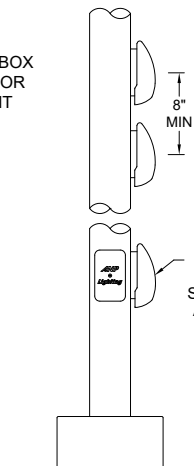
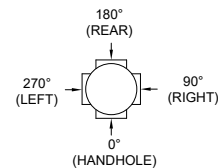
- @2'-6" & same side as hand hole (0°)
- @6'-6" & to the right of hand hole (90°)
- @2'-6" & to the rear of hand hole (180°)
- @2'-6" & to the left of hand hole (270°)

4 FINISHES

Sequoia

99

Consult Factory for additional paint charges and availability.

**ADDITIONAL ACCESSORIES****GFI****GFI WPU**EXTB
EXTENSION BOX
REQUIRED FOR
SAME HEIGHTGFI & GFI-WPU
CANNOT BE IN
SAME LOCATION
AS HAND HOLE**FINISHES**

- A polyester powder coat high quality finish is electro-statically applied and baked at 430° for exceptional durability and color retention. Products undergo an intensive five-step cleansing and pretreatment process for maximum paint adhesion. 5-year warranty for aluminum products. 2-year warranty for steel products.
- Marine grade finish provides superior salt, humidity and UV protection. This coating withstands up to 3,000 hours of continuous salt spray, comes with a 2-year warranty and is available in either a textured or gloss surface.

WARRANTYSee www.ANPlighting.com for complete fixture warranty.

LED warranty information

- 5 year limited warranty*
- ANPlighting.com