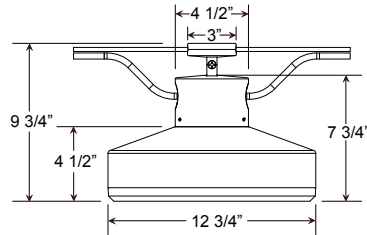


Project: \_\_\_\_\_  
 Fixture Type: \_\_\_\_\_ Quantity: \_\_\_\_\_  
 Customer: \_\_\_\_\_



**Specifications**

**Material:**  
 All parts are durable 356 cast aluminum and heavy duty spun aluminum. All hardware provided shall be stainless steel or zinc plated steel.

**Lens:**  
 Light Guide LED Panels feature a high transparency, dot matrix PMMA light guide with an optical efficiency up to 76%.

**Fixture Mounting:**  
 Catenary hub accepts 1/4" diameter structural cable. Cable is not included and their connections to structures are to be designed by a qualified structural engineer. Tilt adjustment to 30° and is lockable.

**Drivers:**  
 Universal voltage 120-277 is standard. 0-10v dimming to 10% is standard for Light Guide LED.

See page 2 table for more LED engine and driver specifications.

**Electrical:**  
 Black power cord, 18-5 SJTW (Black, White, Green, Purple and Gray) Supplied by others. 20kA max/10kA nominal surge protection device is standard.

**Certifications:**  
 UL Listed for outdoor, wet location. IP66 rated.

**Finish:**  
 A polyester powder coat high quality finish is electro-statically applied and baked at 430° for exceptional durability and color retention. Products undergo an intensive five-step cleansing and pretreatment process for maximum paint adhesion.

Marine grade finish provides superior salt, humidity and UV protection. This coating withstands up to 3000 hours of continuous salt spray, comes with a 5-year warranty and is available in either a textured or gloss surface.

**Modifications:**  
 Consult factory for custom or modified designs.

**EQ101  
 LED**

**Weight:** 15 lbs  
**EPA:** 0.41

Catalog Logic

**EQ101** | **4** | **E039LD** | **T5** | **40K** - **PC** - **72**

Luminaire Series | Catenary Mount | Light Source & Wattage | Optics | CCT | Accessories | Finish

Catalog Number

**EQ101** | **1** | **2** | **3** | **4** | **5** | **6**

**1** **FIXTURE ORIENTATION**

4 Catenary Mount
------------------

**2** **LIGHT SOURCE & WATTAGES**

<b>E030LD</b> (30w Light Guide LED)
<b>E039LD</b> (39w Light Guide LED)
<b>E046LD</b> (46w Light Guide LED)

**3** **OPTICS**

<b>T2</b> (Type II)
<b>T3</b> (Type III)
<b>T4</b> (Type IV)
<b>T5</b> (Type V)

**4** **COLOR TEMPERATURE (CCT)**

<b>27K</b> (2700K)
<b>30K</b> (3000K)
<b>35K</b> (3500K)
<b>40K</b> (4000K)

**5** **ACCESSORIES**

<b>HLMSPC-FM</b> (Integral high-low motion sensor plus photocell; <b>See page 2 for specifications</b> )
<b>PC</b> (Button Photo Cell)

**6** **FINISHES**

\*Premium and Marine Grade Finish have additional charges

Standard Colors	Standard Grade	Marine Grade*	Standard Colors	Standard Grade	Marine Grade*
Aspen Green	10	10M	Architectural Bronze	51	51M
Cantaloupe	11	11M	Patina Verde	52	52M
Lilac	12	12M	Copper Clay	53	53M
Putty	13	13M	Silver	56	56M
Raw Unfinished	40	NA	Black Verde	61	61M
Black	41	41M	Painted Chrome	70	70M
Forest Green	42	42M	Painted Copper	71	71M
Bright Red	43	43M	Textured Black	72	72M
White	44	44M	Matte Black	73	73M
Bright Blue	45	45M	Textured Architectural Bronze	76	76M
Sunny Yellow	46	46M	Textured White	77	77M
Aqua Green	47	47M	Textured Silver	78	78M
Galvanized	49	NA		Premium Grade*	Marine Grade*
Navy	50	50M	Carbon Graphite	96	96M

Consult Factory for additional paint charges and availability.

Project: \_\_\_\_\_  
 Fixture Type: \_\_\_\_\_ Quantity: \_\_\_\_\_  
 Customer: \_\_\_\_\_

**LIGHT GUIDE**

**PERFORMANCE**

Nominal System Wattage	CCT	CRI	Type II			Type III			Type IV			Type V			Drive Current Types 3 / 4 / 5	Drive Current Type2								
			Delivered Lumens	Lumens Per Watt	B U G	Delivered Lumens	Lumens Per Watt	B U G	Delivered Lumens	Lumens Per Watt	B U G	Delivered Lumens	Lumens Per	B U G										
30W	2700K	70	2969	99	1	0	1	3240	108	2	0	2	3327	111	1	0	1	3272	109	2	0	1	925	900
	3000K	70	3067	102	1	0	1	3347	111	2	0	2	3437	115	1	0	1	3380	110	2	0	1	925	900
	3500K	70	3116	104	1	0	1	3400	113	2	0	2	3492	116	1	0	1	3434	114	2	0	1	925	900
	4000K	70	3214	107	1	0	1	3508	117	2	0	2	3602	120	1	0	1	3543	115	2	0	1	925	900
39W	2700K	70	3860	99	2	0	2	4212	108	2	0	2	4326	111	2	0	2	4174	107	2	0	1	1200	1150
	3000K	70	3987	102	2	0	2	4351	112	2	0	2	4469	115	2	0	2	4312	111	2	0	1	1200	1150
	3500K	70	4051	104	2	0	2	4421	113	2	0	2	4540	116	2	0	2	4381	112	2	0	1	1200	1150
	4000K	70	4179	107	2	0	2	4560	117	2	0	2	4683	120	2	0	2	4519	116	2	0	1	1200	1150
46W	2700K	70	4493	99	2	0	2	5023	108	2	0	2	5106	111	2	0	2	4983	107	3	0	1	1435	1360
	3000K	70	4641	102	2	0	2	5189	112	2	0	2	5275	115	2	0	2	5148	111	3	0	1	1435	1360
	3500K	70	4716	104	2	0	2	5272	113	2	0	2	5360	117	2	0	2	5230	112	3	0	1	1435	1360
	4000K	70	4864	107	2	0	2	5438	117	2	0	2	5528	120	2	0	2	5395	116	3	0	1	1435	1360

**LED SPECIFICATION**

- Typical Efficacy is 98 - 120 lumens per watt
- Color temp: 2700K, 3000K, 3500K and 4000K
- CRI: 70
- Distribution: Type II, III, IV & V

**SURGE SUPPRESSION**

- A Surge Protection Device (SPD) is standard featuring a 20kA maximum discharge current 8/20µs Waveform (Imax); 10kA nominal discharge current 8/20µs Waveform (In) and thermally protected varistor technology.
- Meets IEEE C62.41.2 Location Category C High and US Dept of Energy MSSLC Model Spec.
- SPD shall be wired in series and will result in an open circuit during a fault state, resulting in the luminaire to turn off to protect system components thereby indicating SPD module replacement.

**WARRANTY**

See [www.ANPlighting.com](http://www.ANPlighting.com) for complete fixture warranty.

LED warranty information

- 5 year limited warranty\*

\*Limited Warranty: A typical year is defined as 4380 hours of operation

**DRIVER SPECIFICATION**

- 120 thru 277 Universal Voltage
- 50/60 HZ
- 0-10V dimming to 10%
- Minimum operating temperature: -30°C
- Driver Efficiency > 85%; Power Factor > 0.90
- Integral Surge Protection IP66
- Lifetime: 50,000 hours
- 6.0kV in conformance to ANSI C62.41 Cat. B
- UL, cUL, CE

**HIGH-LOW MOTION SENSOR**

- 0-10v configurable output set to 10%, 25% or 50% dimming
- Adjustable time delay
- 45° Detection
- Mounts Integral to fixture
- Lens available in white only
- Satisfies California Title 24

**ACCESSORIES**



HLMSPC-FM



PC