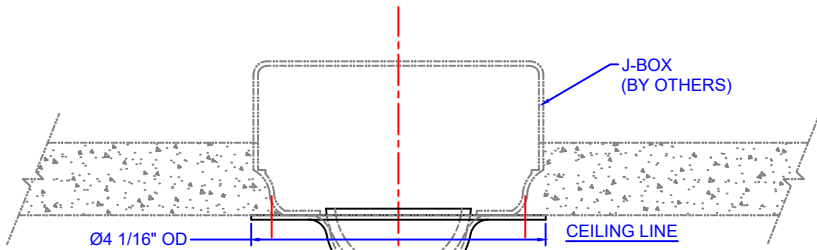




PROPORTIONAL VIEW



STC5 - FLEXIBLE FIXTURE HANGER

- 15.0° SWING FROM VERTICAL
- APPLETON JBK-75-BS (3/4" BALL TYPE)
- NOTE: SHALL MOUNT TO STRUCTURAL SURFACE; REQUIRES ADAPTER PLATE

REDUCER MOUNTED TO CANOPY MOUNT W/ 1/4" IP NIPPLE SECURED TO COUPLING

STANDARD COUPLING ATTACHMENT W/ DUAL PIN MOUNT

LA0723
DECORATIVE CONSTRUCTED LUMINAIRE ASSEMBLY

FABRICATED ALUMINUM HOOD (HINGED AND SECURED VIA 10-24 THUMBSCREW FOR ACCESS)

OSRAM 79370
OT50W/UNV/800C/2DIMLT2/P6
- INPUT VOLTAGE: 120-277V
- PROGRAMMED TO: 400mA
- DIMMING: 0-10V

SANSI 46W LED PLATFORM (P046LD4DT530K)
- DISTRIBUTION: TYPE 5
- CCT: 3000K

FABRICATED ALUMINUM LANTERN HOUSING

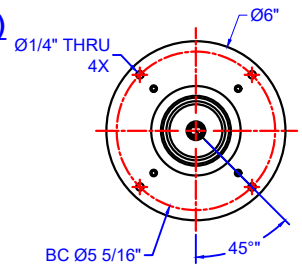
11 3/16" LENS PANEL

AMB
CUSTOM AMBER ACRYLIC LENS PANELS FOR THE LUMINAIRE SIDES
(8) LENS PANELS TOTAL PER LANTERN

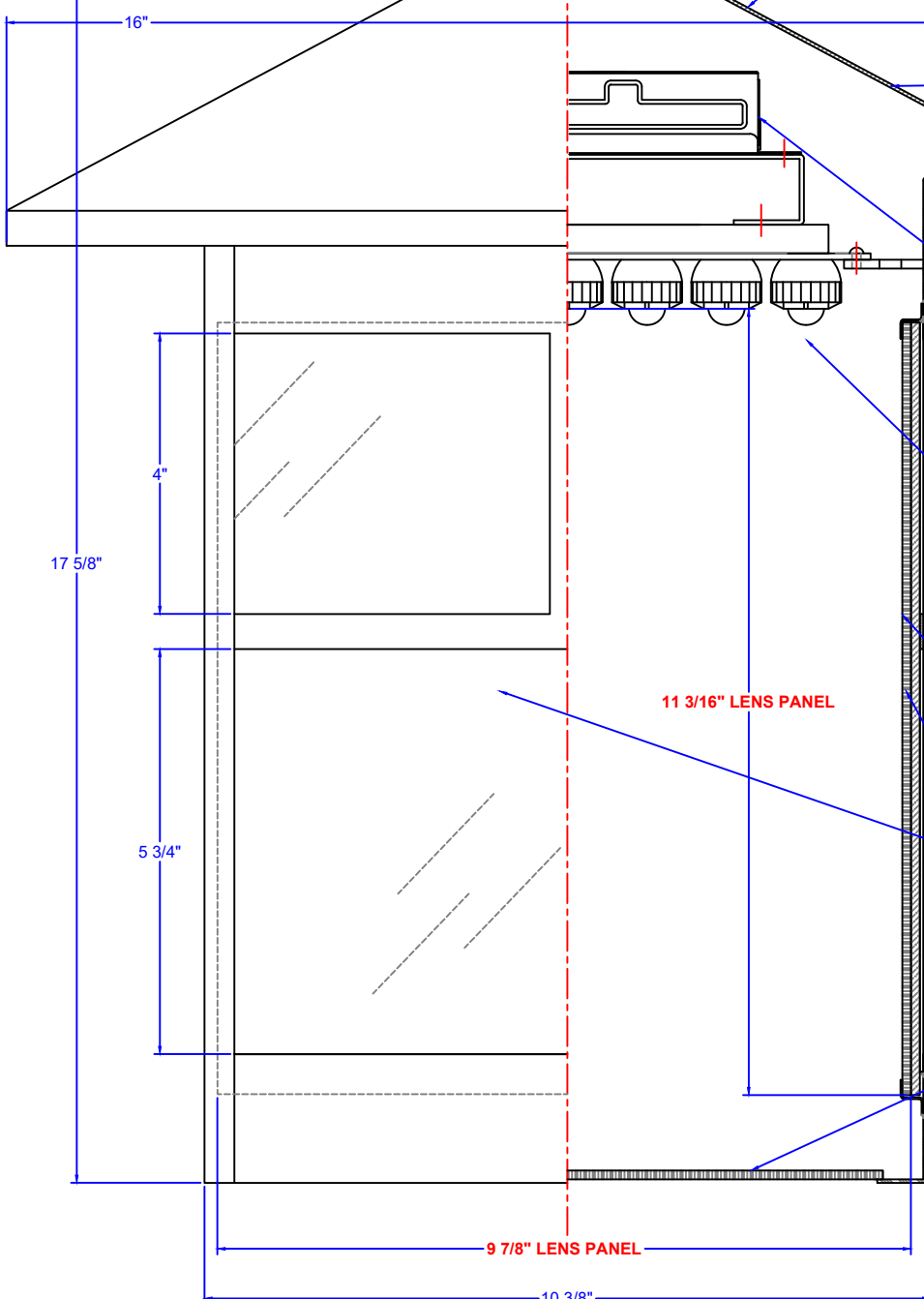
NOTE:
DOUBLE STACKED LENS PANELS
EXTERIOR LENS PANELS: 2404 BRONZE (BROWN)
INTERIOR LENS PANELS: 2422 AMBER (ORANGE)

CL
CLEAR LENS PANEL FOR BOTTOM ONLY

STANDARD PRODUCT	DUE DATE:
ORDER ENTRY	09/03/19
ENGINEERING	10/10/19
PICK ORDERS	11/07/19
CASTING & FAB	11/13/19
WELD	11/19/19
GRIND	11/25/19
PAINT	11/29/19
ASSEMBLY & SHIP	12/09/19



MOUNTING DETAIL



9044 Del Mar Ave.
Montclair, Ca. 91763
(909)-982-1807
(909)-985-4310:fax

ANPLighting

ORDER#: 160086

PART#: STC5Z-LA072-3-AMB-P046LD4DT530K-120-277V

FINISH: #76 TEXT. ARC BRONZE POWDER COAT DRAWN BY: R. CARRILLO

DATE: 07/22/21 SCALE: - QTY: 7 REV: A SHEET: 1 of 1