



SiteLine Pedestrian and Site Lighting



In a project that marries innovative lighting with urban revitalization, ANP Lighting, alongside agency rep Edwin Figueroa & Associates, has brought a fresh glow to one of San Juan's most iconic spaces: La Ventana al Mar, also known as "The Window to the Sea." Nestled in the heart of Condado on Avenida Ashford, this award-winning public park offers residents and visitors a vibrant, open-air connection to the Atlantic Ocean. It is a hub for local events, weekend markets, and jazz festivals.

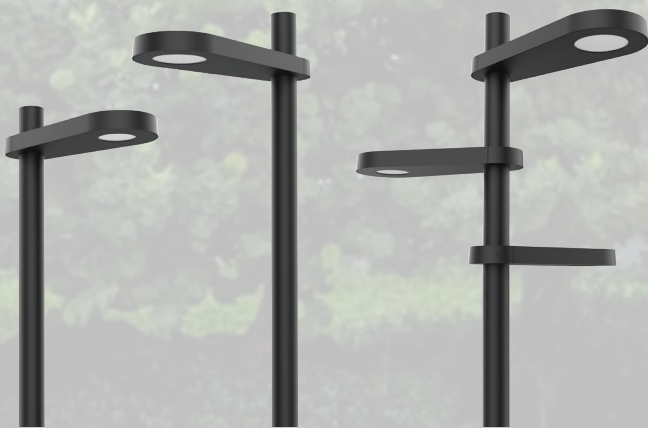
Originally developed as a community response to preserve access to ocean views amid rapid development, La Ventana al Mar was designed by renowned Puerto Rican architect Andrés Mignucci. Since its opening in 2004, it has been a beacon of community spirit and architectural excellence, winning awards from prestigious design institutions like the American Institute of Architects Puerto Rico Chapter and featuring in the international Demo exhibit in Berlin.

Adding to this legacy, ANP Lighting's SiteLine poles—customized with unique tapered designs and equipped with five SLP34 units—now illuminate the park with a balance of design and functionality. The SiteLine Collection is known for its visual comfort and adaptability, boasting a patent-pending clamping mechanism that allows multiple luminaires to be mounted at any height or angle without visible hardware. Recognized with awards like the 2022 LightFair Innovation Award and Building Green's Top 10 Products of 2023, SiteLine poles provide advanced LED technology suited to this dynamic public space.

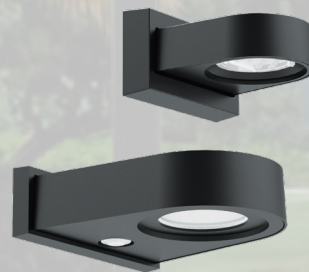
Through this installation, ANP Lighting and Edwin Figueroa & Associates enhance the park's evening ambiance, ensuring that La Ventana al Mar continues to shine as a beloved gathering place in San Juan's trendiest neighborhood.

SiteLine Pedestrian and Site Lighting

The award-winning SiteLine Collection by ANP Lighting seamlessly blends design, technology, and visual comfort, offering innovative lighting solutions for various applications. Featuring two luminaire sizes, a companion bollard, and two wall mounts, SiteLine delivers performance and versatility. With a unique patent-pending clamping mechanism, multiple fixtures can be mounted on a single pole at any height or angle without visible hardware. The collection boasts advanced LED technology and is recognized for its excellence. It has won prestigious awards like the 2022 LightFair Innovation Award and Building Green's Top 10 Products of 2023, reinforcing its position as a top choice in architectural lighting.



LUMINAIRES - TWO SIZES + UNIQUE MOUNTING OPTIONS



WALL MOUNTS - TWO SIZES



BOLLARD - ONE SIZE